

Data cabinets



DATA CABINETS



Data cabinets are suitable for use from the smallest apartments to large detached houses. The RKM and RKS data cabinets are made from hot galvanised steel plate that has been painted white. The RKP data cabinets are made of white plastic. The IT space can be equipped with a wide variety of fittings, which enables several different uses. All data cabinets are available for both surface and flush mounting.

DATA CABINETS

| SSTL number | Name | Product description | In | Installation |
|-------------|---------------------------------------|---------------------|----|--------------|
| 3312416 | Data-asennuskotelo FE RKS500P-IT | In0, 270x500x102 | | |
| 3312421 | Data-asennuskotelo FE RKM560P-IT/0,24 | In0, 500x560x90 | | |
| 3312426 | Data-asennuskotelo FE ITP700-IT/0,24 | In0, 500x700x99 | | |

3312416

Data-asennuskotelo FE RKS500P-IT

Data-asennuskotelo FE RKS500P-IT
In0, 270x500x102

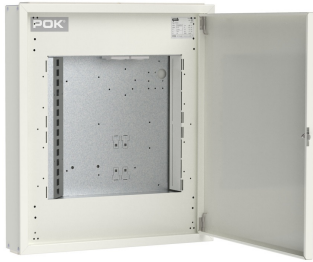
21.11.2024



Technical details

| | | | |
|-------------------|---------|---------------|------------------------------|
| Electrical number | 3312416 | Material | Ku-Si |
| Ue (V) | 230/400 | RJ -connector | 12x(17*18) + 14x(15*19,5) |
| IP | 20C | Installation | Surface |
| fn | | Väri | RAL9016 |
| Icw | <5kA | | |





Technical details

| | | | |
|--------------------|---------|--------------------|------------------------------------|
| Electrical number | 3312421 | Breaker 1-pole C10 | - |
| Ue (V) | 230/400 | Breaker 1-pole B16 | - |
| In (A) | - | Breaker 1-pole C16 | - |
| IP | 20 | Breaker 1-pole C20 | - |
| fn | | Breaker 3-pole C16 | - |
| Icw | <5 kA | | - |
| Material | Ku-Si | | - |
| Main switch (A) | - | RJ -connector | 14x(15*20),12x(17*18),14x(15*19,5) |
| Breaker 1-pole C6 | - | | |
| Breaker 1-pole B10 | - | Installation | Surface |
| | | Väri | RAL9010 |





Technical details

| | | | |
|--------------------|---------|--------------------|------------------------------|
| Electrical number | 3312426 | Breaker 1-pole C10 | - |
| Ue (V) | 230/400 | Breaker 1-pole B16 | - |
| In (A) | - | Breaker 1-pole C16 | - |
| IP | 20 | Breaker 1-pole C20 | - |
| fn | | Breaker 3-pole C16 | - |
| Icw | <5 kA | | - |
| Material | Ku-Si | | - |
| Main switch (A) | - | RJ -connector | 22x(15x19,5) + 18x(17x18) |
| Breaker 1-pole C6 | - | | |
| Breaker 1-pole B10 | - | Installation | Pinta/Uppo |
| | | Väri | RAL9010 |

