

Data cabinets



DATA CABINETS



Data cabinets are suitable for use from the smallest apartments to large detached houses. The RKM and RKS data cabinets are made from hot galvanised steel plate that has been painted white. The RKP data cabinets are made of white plastic. The IT space can be equipped with a wide variety of fittings, which enables several different uses. All data cabinets are available for both surface and flush mounting.

DATA CABINETS

SSTL number	Name	Product description	In	Installation
3312416	Data-asennuskotelo FE RKS500P-IT	In0, 270x500x102		
3312421	Data-asennuskotelo FE RKM560P-IT/0,24	In0, 500x560x90		
3312426	Data-asennuskotelo FE ITP700-IT/0,24	In0, 500x700x99		

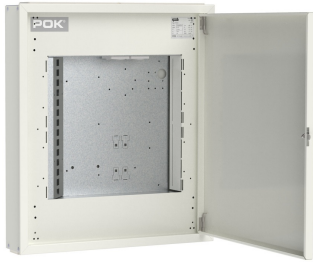
3312416**Data-asennuskotelo FE RKS500P-IT**Data-asennuskotelo FE RKS500P-IT
In0, 270x500x102

23.11.2024

**Technical details**

Electrical number	3312416	Material	Ku-Si
Ue (V)	230/400	RJ -connector	12x(17*18) + 14x(15*19,5)
IP	20C	Installation	Surface
fn		Väri	RAL9016
Icw	<5kA		





Technical details

Electrical number	3312421	Breaker 1-pole C10	-
Ue (V)	230/400	Breaker 1-pole B16	-
In (A)	-	Breaker 1-pole C16	-
IP	20	Breaker 1-pole C20	-
fn		Breaker 3-pole C16	-
Icw	<5 kA		-
Material	Ku-Si		-
Main switch (A)	-	RJ -connector	14x(15*20),12x(17*18),14x(15*19,5)
Breaker 1-pole C6	-		
Breaker 1-pole B10	-	Installation	Surface
		Väri	RAL9010





Technical details

Electrical number	3312426	Breaker 1-pole C10	-
Ue (V)	230/400	Breaker 1-pole B16	-
In (A)	-	Breaker 1-pole C16	-
IP	20	Breaker 1-pole C20	-
fn		Breaker 3-pole C16	-
Icw	<5 kA		-
Material	Ku-Si		-
Main switch (A)	-	RJ -connector	22x(15x19,5) + 18x(17x18)
Breaker 1-pole C6	-		
Breaker 1-pole B10	-	Installation	Pinta/Uppo
		Väri	RAL9010

